

\$274,900 - 12931 108 Street, Edmonton

MLS® #E4431882

\$274,900

0 Bedroom, 1.00 Bathroom,
Single Family on 0.00 Acres

Lauderdale, Edmonton, AB

48' X 157 ' LOT IN LAUDERDALE. READY
FOR MLI SELECT 4 PLEX APPLICATION.



Essential Information

| | |
|------------|-----------------|
| MLS® # | E4431882 |
| Price | \$274,900 |
| Bathrooms | 1.00 |
| Full Baths | 1 |
| Acres | 0.00 |
| Type | Single Family |
| Sub-Type | Vacant Lot/Land |
| Status | Active |

Community Information

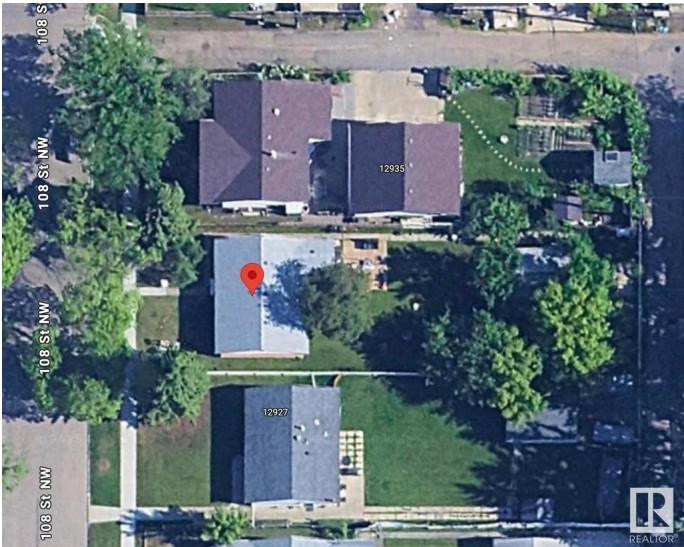
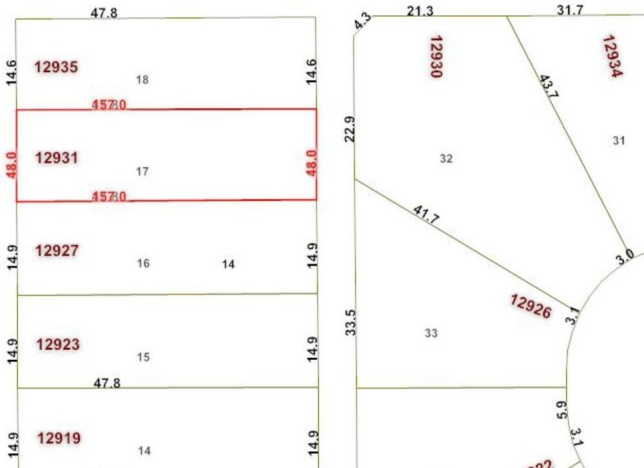
| | |
|-------------|------------------|
| Address | 12931 108 Street |
| Area | Edmonton |
| Subdivision | Lauderdale |
| City | Edmonton |
| County | ALBERTA |
| Province | AB |
| Postal Code | T5E 4X2 |

Amenities

| | |
|---------|------------------------|
| Parking | Single Garage Detached |
|---------|------------------------|

Exterior

| | |
|-------------------|---|
| Exterior Features | Public Transportation, Schools, Shopping Nearby |
|-------------------|---|



Additional Information

Date Listed April 20th, 2025
Days on Market 4
Zoning Zone 01

DATA IS DEEMED RELIABLE BUT IS NOT GUARANTEED ACCURATE BY THE REALTORS® ASSOCIATION OF EDMONTON. COPYRIGHT 2025 BY THE REALTORS® ASSOCIATION OF EDMONTON. ALL RIGHTS RESERVED.Trademarks are owned or controlled by the Canadian Real Estate Association (CREA) and identify real estate professionals who are members of CREA (REALTOR®, REALTORS®) and/or the quality of services they provide (MLS®, Multiple Listing Service®)
Listing information last updated on April 24th, 2025 at 6:02am MDT