

\$339,900 - 64 2051 Towne Centre Boulevard, Edmonton

MLS® #E4429901

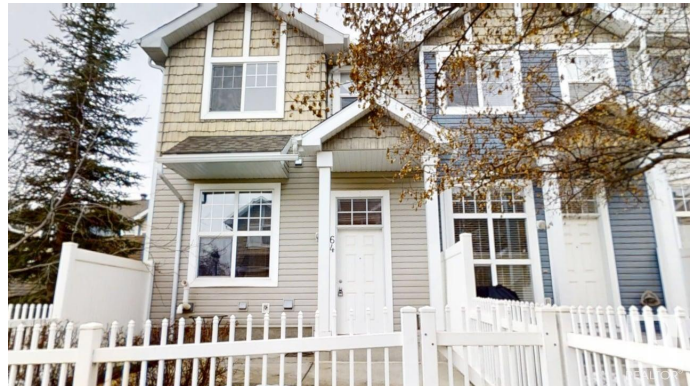
\$339,900

3 Bedroom, 2.50 Bathroom, 1,225 sqft
Condo / Townhouse on 0.00 Acres

Terwillegar Towne, Edmonton, AB

Here is your opportunity to live in very sought after, family friendly community of Terwillegar Towne. This 3 bedrooms, 3 bathrooms, end unit townhouse w/double attached garage, in pet friendly complex, is ideally located in the complex next to visitors parking & steps to access nature reserve & green space.

Property interior has been recently updated with fresh paint & carpets steam cleaned. Easy maintenance tile & laminate flooring throughout the open concept main level. Galley style kitchen w/raised eating bar & stainless steel appliance. Upstairs are 3 good size bedrooms. Primary bedroom features a walk in closet & 3 pc ensuite with full size walk in shower. .Walking distance to multiple K-12 schools, city Rec Centre, Leger main bus terminal &cafes, restaurants, stores & all amenities. Quick access to Terwillegar Drive, Anthony Henday & Whitemud freeways. Conveniently located within 5 minutes drive to all services & big box stores in Windermere. Great community to call home!



Built in 2008

Essential Information

MLS® #	E4429901
Price	\$339,900
Bedrooms	3

Bathrooms	2.50
Full Baths	2
Half Baths	1
Square Footage	1,225
Acres	0.00
Year Built	2008
Type	Condo / Townhouse
Sub-Type	Townhouse
Style	2 Storey
Status	Active

Community Information

Address	64 2051 Towne Centre Boulevard
Area	Edmonton
Subdivision	Terwillegar Towne
City	Edmonton
County	ALBERTA
Province	AB
Postal Code	T6R 0G8

Amenities

Amenities	No Smoking Home, Parking-Visitor
Parking Spaces	2
Parking	Double Garage Attached

Interior

Interior Features	ensuite bathroom
Appliances	Dishwasher-Built-In, Dryer, Garage Control, Garage Opener, Microwave Hood Fan, Refrigerator, Stove-Electric, Washer, Window Coverings
Heating	Forced Air-1, Natural Gas
Stories	2
Has Basement	Yes
Basement	Partial, Unfinished

Exterior

Exterior	Wood, Vinyl
Exterior Features	Fenced, Low Maintenance Landscape, Playground Nearby, Public Swimming Pool, Public Transportation, Schools, Shopping Nearby
Roof	Asphalt Shingles

Construction	Wood, Vinyl
Foundation	Concrete Perimeter

School Information

Elementary	Ester Starkman
Middle	Ester Starkman
High	Lillian Osborne

Additional Information

Date Listed	April 9th, 2025
Days on Market	11
Zoning	Zone 14
HOA Fees	138
HOA Fees Freq.	Annually
Condo Fee	\$314

DATA IS DEEMED RELIABLE BUT IS NOT GUARANTEED ACCURATE BY THE REALTORS® ASSOCIATION OF EDMONTON. COPYRIGHT 2025 BY THE REALTORS® ASSOCIATION OF EDMONTON. ALL RIGHTS RESERVED.Trademarks are owned or controlled by the Canadian Real Estate Association (CREA) and identify real estate professionals who are members of CREA (REALTOR®, REALTORS®) and/or the quality of services they provide (MLS®, Multiple Listing Service®)

Listing information last updated on April 20th, 2025 at 8:02am MDT