

Courtesy Of Cheryl A Turpin Of Digger Real Estate Inc.

\$430,000 - 1805 Westerra Loop, Stony Plain

MLS® #E4428844

\$430,000

3 Bedroom, 2.50 Bathroom, 1,628 sqft

Single Family on 0.00 Acres

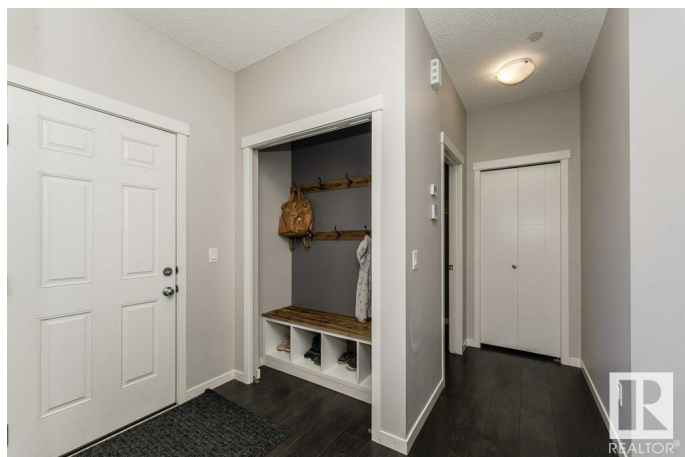
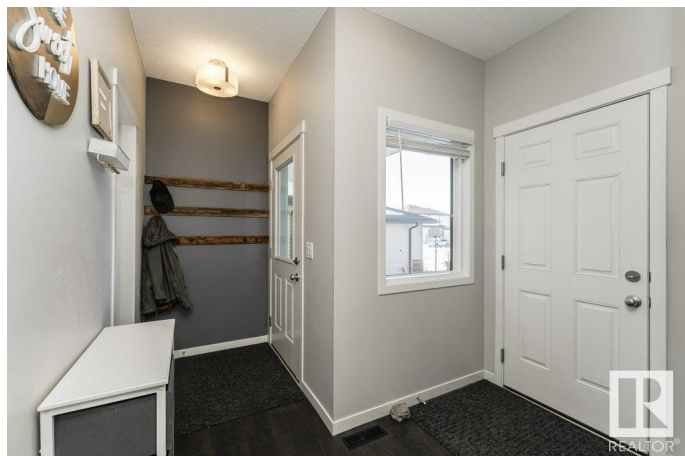
Westerra, Stony Plain, AB

Located in the lovely community of Westerra within the NEW K-9 Westview school zone. This half duplex offers beautiful finishings throughout & the best part of all, is the lot, which features a pond view from the deck. There is an open concept layout, with a cozy living room featuring a warm gas fireplace. The kitchen area is equipped with a convenient walk-through pantry, quartz countertops, Stainless Steel appliances & large island. Sliding doors off the dining rm onto the deck with privacy screen & fully fenced yard provide a safe & private outdoor space. The primary bedroom is generous with walk in closet & 4 piece ensuite. There are 2 more bedrooms & a 4 piece main bath with laundry area completing the second floor. The basement is framed & ready for future development. This home is perfect for those who want an ambient view on a quiet cul-de-sac close to amenities.

Built in 2017

Essential Information

MLS® #	E4428844
Price	\$430,000
Bedrooms	3
Bathrooms	2.50
Full Baths	2
Half Baths	1



Square Footage	1,628
Acres	0.00
Year Built	2017
Type	Single Family
Sub-Type	Half Duplex
Style	2 Storey
Status	Active

Community Information

Address	1805 Westerra Loop
Area	Stony Plain
Subdivision	Westerra
City	Stony Plain
County	ALBERTA
Province	AB
Postal Code	T7Z 0L8

Amenities

Amenities	Ceiling 9 ft., Deck, Detectors Smoke, No Smoking Home, Sprinkler System-Fire, HRV System
Parking Spaces	4
Parking	Double Garage Attached

Interior

Interior Features	ensuite bathroom
Appliances	Dishwasher-Built-In, Dryer, Garage Opener, Microwave Hood Fan, Refrigerator, Stove-Electric, Washer, Window Coverings
Heating	Forced Air-1, Natural Gas
Fireplace	Yes
Fireplaces	Direct Vent, Mantel
Stories	2
Has Basement	Yes
Basement	Full, Unfinished

Exterior

Exterior	Wood, Stone, Vinyl
Exterior Features	Cul-De-Sac, Fenced, Stream/Pond
Roof	Asphalt Shingles
Construction	Wood, Stone, Vinyl

Foundation Concrete Perimeter

School Information

Elementary K-9 Westview School

Additional Information

Date Listed April 3rd, 2025

Days on Market 8

Zoning Zone 91

DATA IS DEEMED RELIABLE BUT IS NOT GUARANTEED ACCURATE BY THE REALTORS® ASSOCIATION OF EDMONTON. COPYRIGHT 2025 BY THE REALTORS® ASSOCIATION OF EDMONTON. ALL RIGHTS RESERVED. Trademarks are owned or controlled by the Canadian Real Estate Association (CREA) and identify real estate professionals who are members of CREA (REALTOR®, REALTORS®) and/or the quality of services they provide (MLS®, Multiple Listing Service®)

Listing information last updated on April 11th, 2025 at 8:02am MDT