

\$413,500 - 33 1729 Keene Crescent, Edmonton

MLS® #E4428521

\$413,500

2 Bedroom, 2.50 Bathroom, 1,347 sqft

Condo / Townhouse on 0.00 Acres

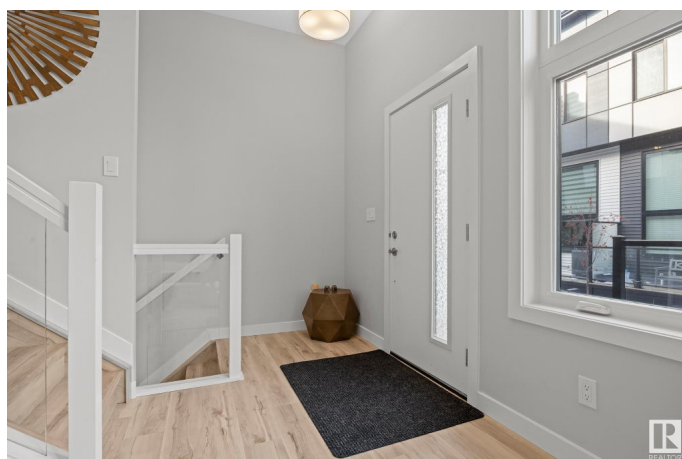
Keswick Area, Edmonton, AB

Welcome to Keswick to this sleek and contemporary townhome designed for style and functionality. This gorgeous home boasts large windows that flood the space with natural light, creating a bright and inviting atmosphere. The minimalist kitchen is a showstopper, featuring sleek stainless steel appliances, pristine white countertops, and modern cabinetry, perfect for those who love clean and sophisticated design. Upstairs features the laundry room and both spacious bedrooms include their own ensuites, providing ultimate privacy and convenience. Enjoy outdoor living with a back balcony, and take advantage of the attached garage for secure parking and extra storage. Nestled in the desirable community of Keswick, this home offers easy access to parks, walking trails, shopping, and major roadways. Don't miss out on this stylish gem!

Built in 2021

Essential Information

MLS® #	E4428521
Price	\$413,500
Bedrooms	2
Bathrooms	2.50
Full Baths	2
Half Baths	1



Square Footage	1,347
Acres	0.00
Year Built	2021
Type	Condo / Townhouse
Sub-Type	Townhouse
Style	2 Storey
Status	Active

Community Information

Address	33 1729 Keene Crescent
Area	Edmonton
Subdivision	Keswick Area
City	Edmonton
County	ALBERTA
Province	AB
Postal Code	T6W 4B6

Amenities

Amenities	Air Conditioner, Ceiling 10 ft., Closet Organizers, Parking-Visitor, Vaulted Ceiling, Vinyl Windows
Parking	Double Garage Attached

Interior

Interior Features	ensuite bathroom
Appliances	Air Conditioning-Central, Dishwasher-Built-In, Dryer, Freezer, Garage Control, Garage Opener, Hood Fan, Oven-Microwave, Refrigerator, Stove-Electric, Washer, Window Coverings
Heating	Forced Air-1, Natural Gas
Fireplace	Yes
Fireplaces	Wall Mount
Stories	2
Has Basement	Yes
Basement	Partial, Unfinished

Exterior

Exterior	Wood, Vinyl
Exterior Features	Golf Nearby, Park/Reserve, Picnic Area, Playground Nearby, Public Transportation, Schools, Shopping Nearby
Roof	EPDM Membrane

Construction	Wood, Vinyl
Foundation	Concrete Perimeter

Additional Information

Date Listed	April 2nd, 2025
Days on Market	16
Zoning	Zone 56
Condo Fee	\$191

DATA IS DEEMED RELIABLE BUT IS NOT GUARANTEED ACCURATE BY THE REALTORS® ASSOCIATION OF EDMONTON. COPYRIGHT 2025 BY THE REALTORS® ASSOCIATION OF EDMONTON. ALL RIGHTS RESERVED.Trademarks are owned or controlled by the Canadian Real Estate Association (CREA) and identify real estate professionals who are members of CREA (REALTOR®, REALTORS®) and/or the quality of services they provide (MLS®, Multiple Listing Service®)

Listing information last updated on April 18th, 2025 at 6:47pm MDT