

## \$219,900 - 248 Surrey Gardens Gardens, Edmonton

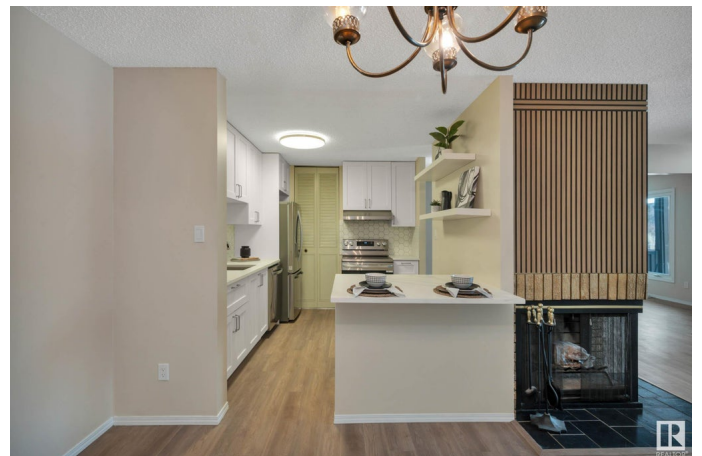
MLS® #E4428517

**\$219,900**

3 Bedroom, 1.00 Bathroom, 1,050 sqft  
Condo / Townhouse on 0.00 Acres

Lymburn, Edmonton, AB

STUDIO-LIKE feel with this AWESOME main-level carriage bungalow condo unit @ Surrey Gardens. Amazing opportunity for 1st time buyers & investors. Tremendous location w/easy access to Hwy 2 & Anthony Henday PLUS a hop away from transit, parks, library, YMCA, schools, shopping & entertainment. Features 2 bdrms, PLUS den (great work/study space OR convert to 3rd bdrm), 4 pc bath, in-suite laundry & loads of charm. HANDSOMELY RENOVATED with focus on KITCHEN|BATH (new appliances, quartz countertops throughout, cabinetry w/chrome finishings, backsplash, trim, baseboards, vanity, toilet, tile, some lighting). Foyer off front porch & landscaped courtyard, greets you to open concept living/dining area w/corner wood fireplace & plenty of space to live comfortably. Private owner's suite is complimented by large WIC w/NEW built-in shelving & access to NEWLY RENO'D BATHROOM. Well-maintained complex & reasonable condo fees. Assigned parking stall 140, visitor parking & exterior storage/utility room. MOVE IN READY, MUST SEE!



Built in 1977

### Essential Information

|        |           |
|--------|-----------|
| MLS® # | E4428517  |
| Price  | \$219,900 |

|                |                   |
|----------------|-------------------|
| Bedrooms       | 3                 |
| Bathrooms      | 1.00              |
| Full Baths     | 1                 |
| Square Footage | 1,050             |
| Acres          | 0.00              |
| Year Built     | 1977              |
| Type           | Condo / Townhouse |
| Sub-Type       | Carriage          |
| Style          | Bungalow          |
| Status         | Active            |

### **Community Information**

|             |                            |
|-------------|----------------------------|
| Address     | 248 Surrey Gardens Gardens |
| Area        | Edmonton                   |
| Subdivision | Lymburn                    |
| City        | Edmonton                   |
| County      | ALBERTA                    |
| Province    | AB                         |
| Postal Code | T5T 1Z3                    |

### **Amenities**

|           |  |
|-----------|--|
| Amenities | Detectors Smoke, Front Porch, Parking-Visitor, See Remarks |
| Parking   | Stall  |

### **Interior**

|              |  |
|--------------|--|
| Appliances   | Dishwasher-Built-In, Dryer, Hood Fan, Refrigerator, Stove-Electric, Washer |
| Heating      | Forced Air-1, Natural Gas  |
| Fireplace    | Yes  |
| Fireplaces   | Corner, Glass Door, See Remarks  |
| Stories      | 1  |
| Has Basement | Yes  |
| Basement     | None, No Basement  |

### **Exterior**

|                   |   |
|-------------------|---|
| Exterior          | Wood, Stucco  |
| Exterior Features | Fenced, Flat Site, Golf Nearby, Landscaped, Low Maintenance Landscape, Picnic Area, Playground Nearby, Public Swimming Pool, Public Transportation, Schools, Shopping Nearby, See Remarks |

|              |                    |
|--------------|--------------------|
| Roof         | Asphalt Shingles   |
| Construction | Wood, Stucco       |
| Foundation   | Concrete Perimeter |

### **School Information**

|            |                           |
|------------|---------------------------|
| Elementary | LYMBURN SCHOOL K-6        |
| Middle     | PARKVIEW SCHOOL 7-9       |
| High       | JASPER PLACE SCHOOL 10-12 |

### **Additional Information**

|                |                 |
|----------------|-----------------|
| Date Listed    | April 2nd, 2025 |
| Days on Market | 2               |
| Zoning         | Zone 20         |
| Condo Fee      | \$529           |

DATA IS DEEMED RELIABLE BUT IS NOT GUARANTEED ACCURATE BY THE REALTORS® ASSOCIATION OF EDMONTON. COPYRIGHT 2025 BY THE REALTORS® ASSOCIATION OF EDMONTON. ALL RIGHTS RESERVED. Trademarks are owned or controlled by the Canadian Real Estate Association (CREA) and identify real estate professionals who are members of CREA (REALTOR®, REALTORS®) and/or the quality of services they provide (MLS®, Multiple Listing Service®)

Listing information last updated on April 4th, 2025 at 1:47pm MDT