

Courtesy Of David M Estephan Of RE/MAX Elite

## \$259,900 - 16519 100 Street, Edmonton

MLS® #E4427842

**\$259,900**

3 Bedroom, 1.50 Bathroom, 1,150 sqft  
Condo / Townhouse on 0.00 Acres

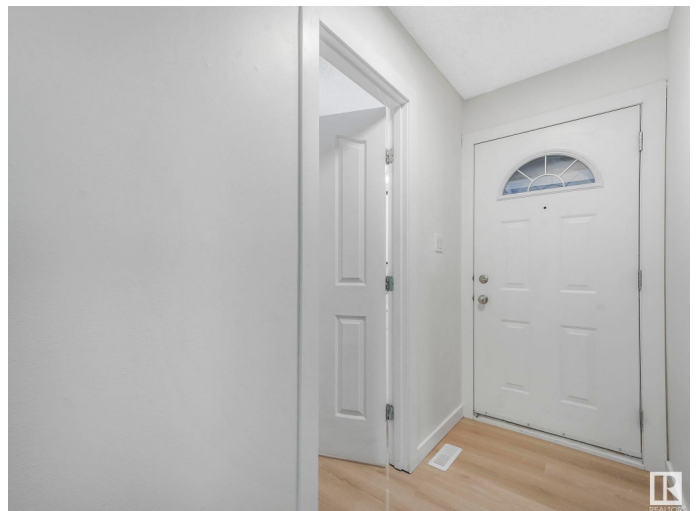
Lorelei, Edmonton, AB

LOW CONDO FEES in a fantastic location!! This spacious townhome in Lorelei is truly "move-in ready", perfect for the first time buyer or investor. BEAUTIFULLY RENOVATED throughout, featuring 3 bedrooms 2 baths, all new doors, flooring, trim, electrical fixtures & outlets, tiling in bathroom and a finished basement "not a detail has been missed. The brand new kitchen has gorgeous quartz countertops, modern cabinetry, BRAND NEW high end s/s appliances and elegant subway tile backsplash. Open to the bright living and dining room which has a custom feature wall, tons of natural light from a large picture window and cozy fireplace. The upper level has three generous sized bedrooms and a fabulous new family bathroom with high end tile, modern fixtures & JACUZZI TUB. The basement is finished with a massive family room providing lots more living space to enjoy. Close to great schools, parks, major shopping and biking trails "this family home is PERFECT! Tons of street parking for visitors.

Built in 1982

### Essential Information

MLS® #	E4427842
Price	\$259,900



Bedrooms	3
Bathrooms	1.50
Full Baths	1
Half Baths	1
Square Footage	1,150
Acres	0.00
Year Built	1982
Type	Condo / Townhouse
Sub-Type	Townhouse
Style	2 Storey
Status	Active

### **Community Information**

Address	16519 100 Street
Area	Edmonton
Subdivision	Lorelei
City	Edmonton
County	ALBERTA
Province	AB
Postal Code	T5X 5H4

### **Amenities**

Amenities	Detectors Smoke, No Animal Home, No Smoking Home, Parking-Visitor, Vinyl Windows
Parking	Stall

### **Interior**

Appliances	Dishwasher-Built-In, Dryer, Refrigerator, Stove-Electric, Washer
Heating	Forced Air-1, Natural Gas
Fireplace	Yes
Fireplaces	Brick Facing
Stories	3
Has Basement	Yes
Basement	Full, Finished

### **Exterior**

Exterior	Wood, Stucco, Vinyl
Exterior Features	Fenced, Playground Nearby, Public Transportation, Schools, Shopping Nearby

Roof	Asphalt Shingles
Construction	Wood, Stucco, Vinyl
Foundation	Concrete Perimeter

### **Additional Information**

Date Listed	March 27th, 2025
Days on Market	15
Zoning	Zone 27
Condo Fee	\$260

DATA IS DEEMED RELIABLE BUT IS NOT GUARANTEED ACCURATE BY THE REALTORS® ASSOCIATION OF EDMONTON. COPYRIGHT 2025 BY THE REALTORS® ASSOCIATION OF EDMONTON. ALL RIGHTS RESERVED. Trademarks are owned or controlled by the Canadian Real Estate Association (CREA) and identify real estate professionals who are members of CREA (REALTOR®, REALTORS®) and/or the quality of services they provide (MLS®, Multiple Listing Service®)

Listing information last updated on April 11th, 2025 at 12:32pm MDT