

\$165,000 - 140 142 Selkirk Place, Leduc

MLS® #E4426927

\$165,000

2 Bedroom, 1.00 Bathroom, 894 sqft
Condo / Townhouse on 0.00 Acres

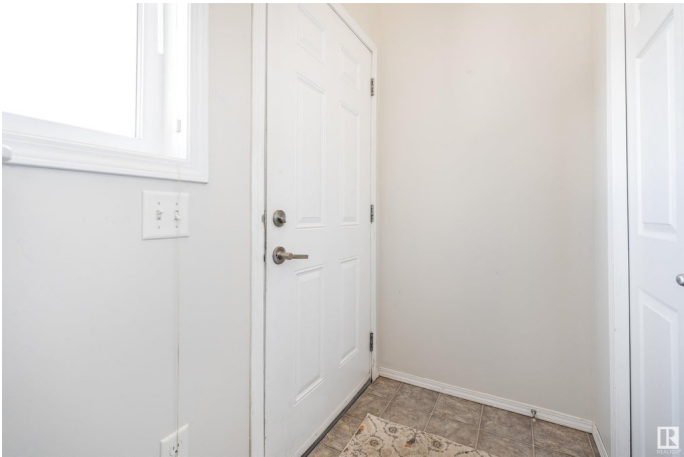
Suntree (Leduc), Leduc, AB

Fantastic Investment Opportunity in Suntree! Discover this beautifully designed 2-bedroom home in the peaceful community of Suntree, surrounded by parks, schools, playgrounds, and scenic walking trails. This open-concept layout offers a spacious great room, perfect for both living and dining areas. The modern kitchen features sleek stainless steel appliances, rich dark wood cabinetry, and a stylish tiled backsplash. Enjoy two generously sized bedrooms, including a comfortable primary suite, along with a well-appointed 4-piece bathroom and a convenient laundry/utility room just off the great room. Additional perks include visitor parking, a designated stall, and low condo fees. Located just minutes from schools, shopping, public transportation, and Leduc Common, this home offers unbeatable convenience and investment potential.

Built in 2012

Essential Information

MLS® #	E4426927
Price	\$165,000
Bedrooms	2
Bathrooms	1.00
Full Baths	1
Square Footage	894



Acres	0.00
Year Built	2012
Type	Condo / Townhouse
Sub-Type	Half Duplex
Style	Bi-Level
Status	Active

Community Information

Address	140 142 Selkirk Place
Area	Leduc
Subdivision	Suntree (Leduc)
City	Leduc
County	ALBERTA
Province	AB
Postal Code	T9E 0M9

Amenities

Amenities	Detectors Smoke, No Animal Home, No Smoking Home
Parking	Stall

Interior

Appliances	Dishwasher-Built-In, Dryer, Microwave Hood Fan, Refrigerator, Washer
Heating	Forced Air-1, Natural Gas
Stories	1
Has Basement	Yes
Basement	None, No Basement

Exterior

Exterior	Wood, Vinyl
Exterior Features	Playground Nearby, Public Transportation, Schools, Shopping Nearby
Roof	Asphalt Shingles
Construction	Wood, Vinyl
Foundation	Concrete Perimeter

Additional Information

Date Listed	March 21st, 2025
Days on Market	30
Zoning	Zone 81
Condo Fee	\$272

DATA IS DEEMED RELIABLE BUT IS NOT GUARANTEED ACCURATE BY THE REALTORS® ASSOCIATION OF EDMONTON. COPYRIGHT 2025 BY THE REALTORS® ASSOCIATION OF EDMONTON. ALL RIGHTS RESERVED.Trademarks are owned or controlled by the Canadian Real Estate Association (CREA) and identify real estate professionals who are members of CREA (REALTOR®, REALTORS®) and/or the quality of services they provide (MLS®, Multiple Listing Service®)

Listing information last updated on April 20th, 2025 at 4:47pm MDT