

Courtesy Of Henry Han Of Century 21 Masters

\$169,900 - 401 4404 122 Street, Edmonton

MLS® #E4425777

\$169,900

2 Bedroom, 2.00 Bathroom, 1,103 sqft
Condo / Townhouse on 0.00 Acres

Aspen Gardens, Edmonton, AB

This outstanding top-floor, end unit features 1,103 sq. ft., vaulted high ceilings, 2 bedrooms, 1.5 baths, in-suite laundry, and one energized covered parking stall. Condo fee includes electricity, water and heat. A bright open and sun-soaked kitchen boasts a built-in counter and loads of cupboard space. An entertaining size living room with lots of windows and patio doors to a good size east facing balcony. The master suite with 2-pc ensuite. The 4-pc main bath is conveniently situated right outside of the second bedroom. This building offers fantastic amenities, including a fitness center and a party room. Designated schools are Westbrook School (K6) and Vernon Barford School (7-9). Providing easy access to Whitemud Ravine, Snow Valley Ski Hill, major roadways and public transportation.

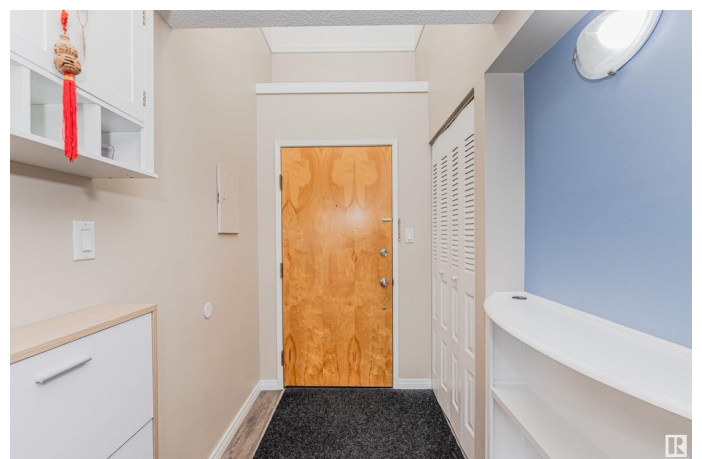
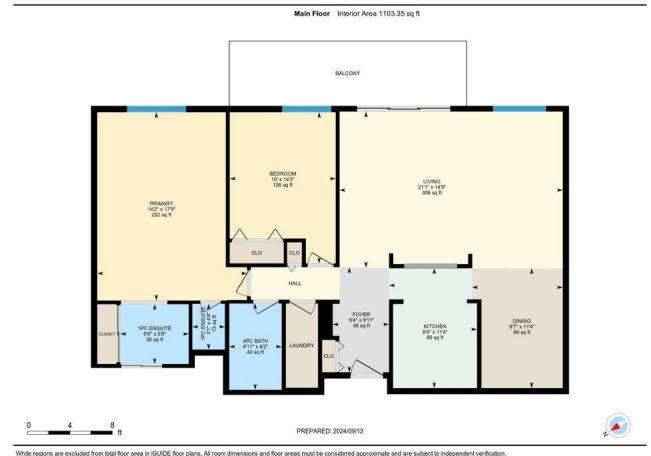
Built in 1976

Essential Information

MLS® #	E4425777
Price	\$169,900
Bedrooms	2
Bathrooms	2.00
Full Baths	1
Half Baths	2
Square Footage	1,103



401-4404 122 St NW, Edmonton, AB



Acres	0.00
Year Built	1976
Type	Condo / Townhouse
Sub-Type	Lowrise Apartment
Style	Single Level Apartment
Status	Active

Community Information

Address	401 4404 122 Street
Area	Edmonton
Subdivision	Aspen Gardens
City	Edmonton
County	ALBERTA
Province	AB
Postal Code	T6J 4A9

Amenities

Amenities	Exercise Room, Intercom, Parking-Visitor, Party Room, Pool-Indoor, Recreation Room/Centre, Secured Parking, Security Door, Television Connection
Parking	Single Carport
Has Pool	Yes

Interior

Interior Features	ensuite bathroom
Appliances	Dishwasher-Built-In, Dryer, Hood Fan, Oven-Microwave, Refrigerator, Stove-Electric, Washer, Window Coverings
Heating	Hot Water, Natural Gas
# of Stories	4
Stories	1
Has Basement	Yes
Basement	None, No Basement

Exterior

Exterior	Wood, Brick, Vinyl
Exterior Features	Fenced, Golf Nearby, Landscaped, Paved Lane, Picnic Area, Playground Nearby, Public Transportation, Schools, Shopping Nearby, Ski Hill Nearby
Roof	Asphalt Shingles
Construction	Wood, Brick, Vinyl

Foundation Concrete Perimeter

Additional Information

Date Listed March 14th, 2025

Days on Market 29

Zoning Zone 16

Condo Fee \$827

DATA IS DEEMED RELIABLE BUT IS NOT GUARANTEED ACCURATE BY THE REALTORS® ASSOCIATION OF EDMONTON. COPYRIGHT 2025 BY THE REALTORS® ASSOCIATION OF EDMONTON. ALL RIGHTS RESERVED. Trademarks are owned or controlled by the Canadian Real Estate Association (CREA) and identify real estate professionals who are members of CREA (REALTOR®, REALTORS®) and/or the quality of services they provide (MLS®, Multiple Listing Service®)

Listing information last updated on April 12th, 2025 at 7:02pm MDT