

## \$749,000 - 106 Eldridge Point(e), St. Albert

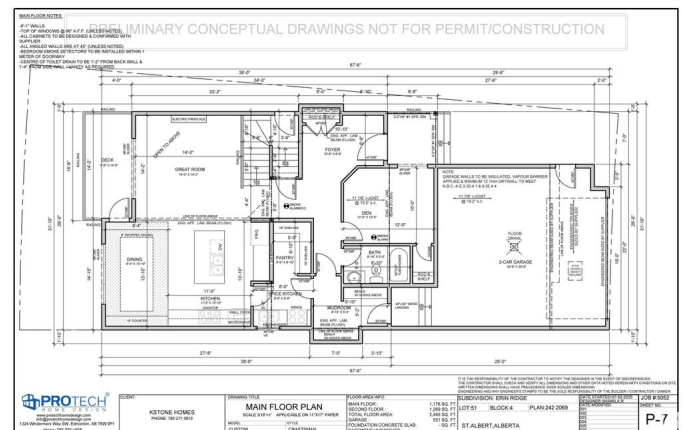
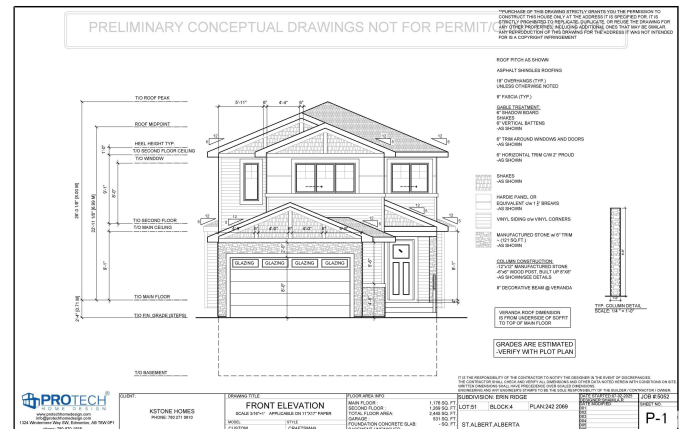
**\$749,000**

Erin Ridge North, St. Albert, AB

Built in 2025

## Essential Information

|                |           |
|----------------|-----------|
| MLS® #         | E4423262  |
| Price          | \$749,000 |
| Bedrooms       | 7         |
| Bathrooms      | 5.00      |
| Full Baths     | 5         |
| Square Footage | 2,510     |
| Acres          | 0.00      |
| Year Built     | 2025      |



|          |                        |
|----------|------------------------|
| Type     | Single Family          |
| Sub-Type | Detached Single Family |
| Style    | 2 Storey               |
| Status   | Active                 |

### Community Information

|             |                       |
|-------------|-----------------------|
| Address     | 106 Eldridge Point(e) |
| Area        | St. Albert            |
| Subdivision | Erin Ridge North      |
| City        | St. Albert            |
| County      | ALBERTA               |
| Province    | AB                    |
| Postal Code | T8N 5X4               |

### Amenities

|           |  |
|-----------|--|
| Amenities | On Street Parking, Carbon Monoxide Detectors, Ceiling 9 ft., Closet Organizers, Deck, Detectors Smoke, No Animal Home, No Smoking Home, Television Connection, See Remarks, HRV System, 9 ft. Basement Ceiling |
| Parking   | Double Garage Attached   |

### Interior

|                   |   |
|-------------------|---|
| Interior Features | ensuite bathroom  |
| Appliances        | Appliances Negotiable, Garage Control, Garage Opener, Hood Fan, See Remarks, Builder Appliance Credit |
| Heating           | Forced Air-1, Natural Gas   |
| Fireplace         | Yes   |
| Fireplaces        | Mantel  |
| Stories           | 3   |
| Has Basement      | Yes   |
| Basement          | Full, Unfinished  |

### Exterior

|                   |   |
|-------------------|---|
| Exterior          | Wood, Stone, Vinyl, Hardie Board Siding   |
| Exterior Features | Golf Nearby, No Back Lane, Playground Nearby, Public Swimming Pool, Public Transportation, Schools, Shopping Nearby, Stream/Pond, See Remarks |
| Roof              | Asphalt Shingles  |
| Construction      | Wood, Stone, Vinyl, Hardie Board Siding   |
| Foundation        | Concrete Perimeter  |

**Additional Information**

Date Listed            February 27th, 2025  
Days on Market      51  
Zoning                Zone 24

DATA IS DEEMED RELIABLE BUT IS NOT GUARANTEED ACCURATE BY THE REALTORS® ASSOCIATION OF EDMONTON. COPYRIGHT 2025 BY THE REALTORS® ASSOCIATION OF EDMONTON. ALL RIGHTS RESERVED.Trademarks are owned or controlled by the Canadian Real Estate Association (CREA) and identify real estate professionals who are members of CREA (REALTOR®, REALTORS®) and/or the quality of services they provide (MLS®, Multiple Listing Service®)  
Listing information last updated on April 19th, 2025 at 5:02am MDT